



# User Reference

## IxNetwork - Equipment Table Entries

**Date: 2/6/15**

**Revision: 1.3**

This controlled document is the proprietary and confidential property of AZTAZ Software, LLC and may be viewed only with the express written permission of AztaZ Software, LLC.

Any duplication, reproduction, or transmission to unauthorized parties without the express written permission of AZTAZ Software, LLC is prohibited.

Copyright © 2008-2015 AZTAZ Software, LLC. All rights reserved.

## Overview

TAZ will run scripts that are generated with the IxNetwork TestComposer. Each port should have its own entry in the *Equipment Table*. Should issues arise please check these *Equipment Table* entries.

## Equipment Table Entries

1. The software version and paths that are entered in the *Equipment Table* must match the IxNetwork version.

**Misc1** – the path to the tcl application. Double-click to display the entire path.

**Misc3** – the IxNetwork software version, in this case 7.22.

Setup Runs **Connect Equipment** Run

Devices Under Test Instruments

Load Save Delete Rows

Equipment Table populated by: *IxNetwork Demo.txt*

Equipment Table: Instruments Single-click Select/Double-click Edit Clear

Misc1	Misc3	Misc4	Address	Chassis	Slot	Module	IDN
C:\Program Files	7.22	C:\Program Fil	192.168.0.30	1	1	1	hscha
C:\Program Files	7.22	C:\Program Fil	192.168.0.30	1	7	15	hscha
C:\Program Files	7.22	C:\Program Fil	192.168.0.30	1	7	1	hscha
C:\Program Files (x86)\Ixia\Tcl\8.5.12.0\bin\tclsh85.exe					7	2	hscha

**Misc4** – the path to the folder with the IxNetwork software. Double-click to display the entire path.

Setup Runs **Connect Equipment** Run

Devices Under Test Instruments

Load Save Delete Rows

Equipment Table populated by: *IxNetwork Demo.txt*

Equipment Table: Instruments Single-click Select/Double-click Edit Clear

Misc3	Misc4	Address	Chassis	Slot	Module	IDN	Language
7.22	C:\Program Fil	192.168.0.30	1	1	1	hschaffer	tcl
7.22	C:\Program Fil	192.168.0.30	1	7	15	hschaffer	tcl
7.22	C:\Program Fil	192.168.0.30	1	7	1	hschaffer	tcl
7.22	C:\Program Files (x86)\Ixia\IxNetwork\7.22-EA\TclScripts\lib\IxTclNetwork						

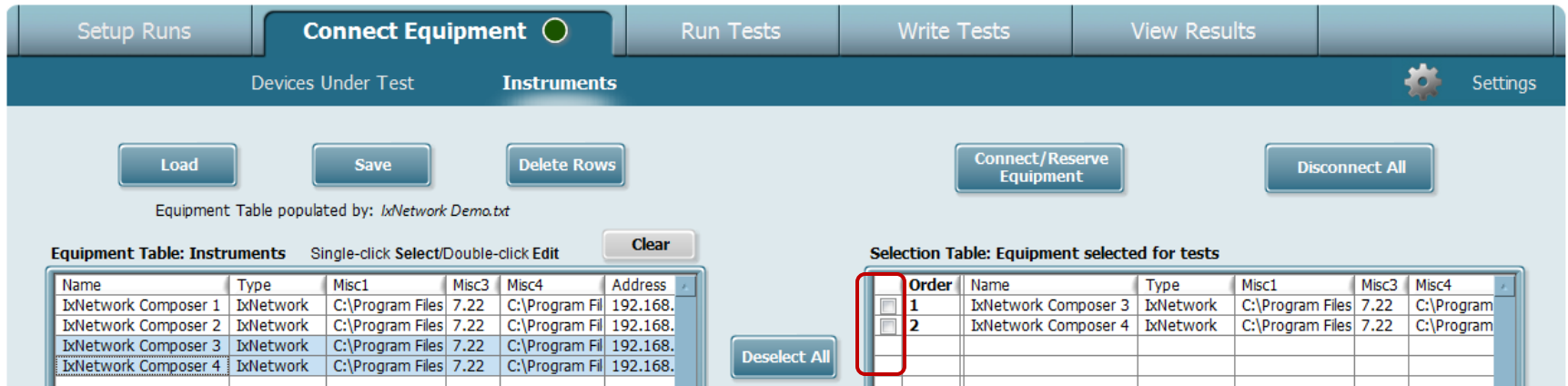
2. The **Equipment Table Address, Chassis, Slot and Module** should match the physical Ixia IP Address, card (slot) and Port (Module) in your topography. TAZ will make adjustments in the tcl script to run on your selected equipment rather than the equipment specified in the tcl script.

In the screenshot below, **TAZ** will run the test on card 7, Ports 1 and 2 at IP Address 192.168.0.30, regardless of the Ixia settings where the script was generated.

The screenshot shows a software interface with a top navigation bar containing 'Setup Runs', 'Connect Equipment' (with a green indicator), and 'Run'. Below this is a header for 'Devices Under Test' and 'Instruments'. There are three buttons: 'Load', 'Save', and 'Delete Rows'. A text label reads 'Equipment Table populated by: IxNetwork Demo.txt'. Below this is a table titled 'Equipment Table: Instruments' with a 'Clear' button. The table has columns: Misc3, Misc4, Address, Chassis, Slot, Module, IDN, and Language. A red box highlights the 'Address', 'Chassis', 'Slot', and 'Module' columns. The table contains four rows of data.

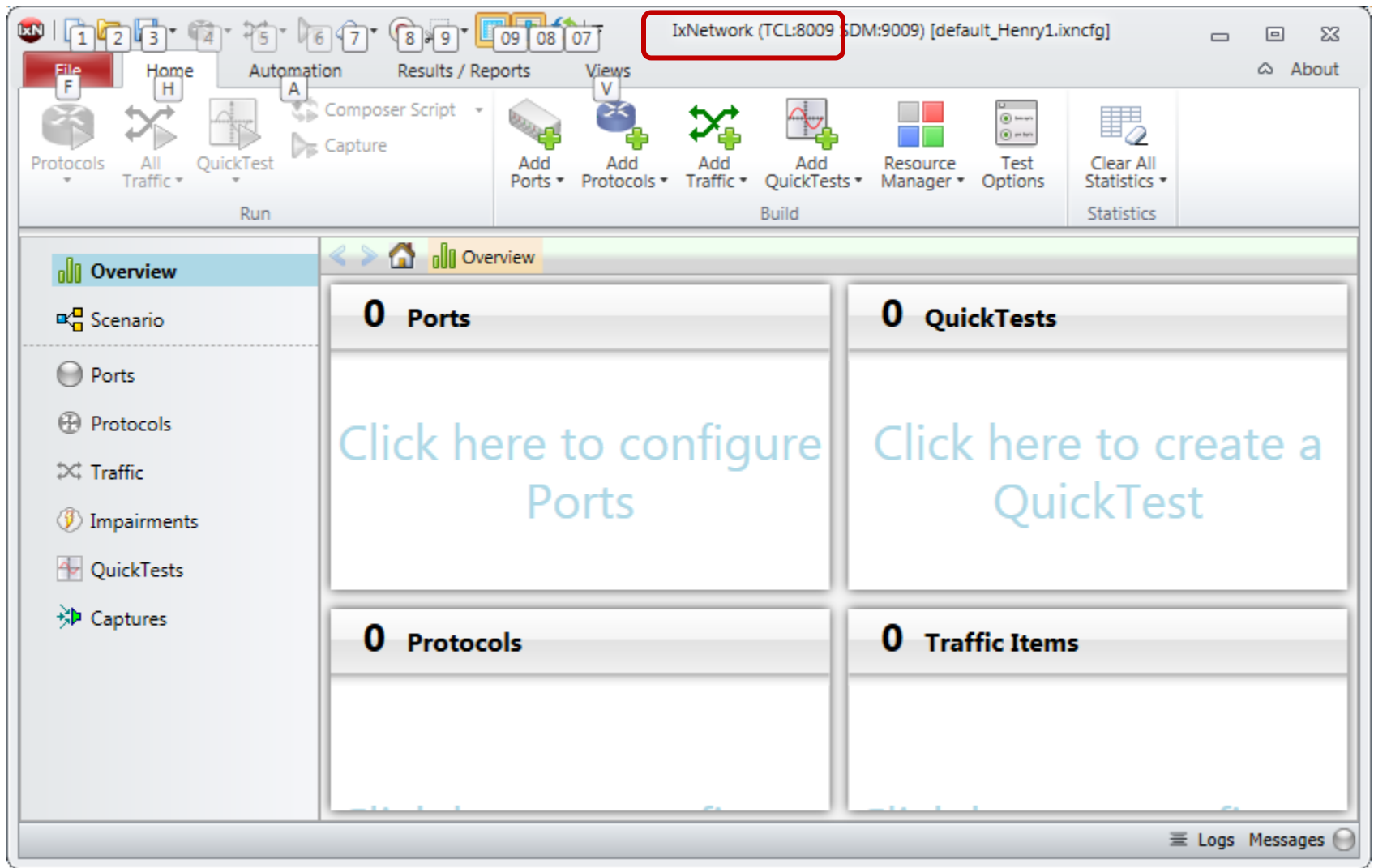
Misc3	Misc4	Address	Chassis	Slot	Module	IDN	Language
7.22	C:\Program Fil	192.168.0.30	1	1	1	hschaffer	tcl
7.22	C:\Program Fil	192.168.0.30	1	7	15	hschaffer	tcl
7.22	C:\Program Fil	192.168.0.30	1	7	1	hschaffer	tcl
7.22	C:\Program Fil	192.168.0.30	1	7	2	hschaffer	tcl

- The IxNetwork equipment should be unchecked before connection, since connections are made within the script itself.



- The IxNetwork generated tcl file and the tcp (Composer) file must be in the same directory. The tcl filepath is specified in **Script{...} ArgB**.

5. The IxNetwork tcl server must be running. Make sure to unblock this application from any running firewalls. The GUI may look the same, but will include **TCL** as indicated in this screenshot. The tcl server opens on port 8009 by default. If for some reason your tcl server opens to a different port, that port number must be entered in **Misc5** of the *Equipment Table*.



---

## Troubleshooting

If there is a problem running the script with **TAZ**, try running the script directly from a tcl shell. The following example is for IxNetworks software version **7.22**.

From a Windows command shell, enter the commands (in bold below):

- a. **cd C:\Program Files (x86)\Ixia\IxNetwork\7.22-EA\tcl8.5\bin** – cd to the folder with the IxNetworks tcl application.
- b. **tclsh85.exe** – this opens a tcl shell with the % prompt. Use forward slashes once in tcl.
- c. **source "C:/Program Files (x86)/Ixia/IxNetwork/7.22-EA/TclScripts/lib/IxTclNetwork/IxNetworkWish.tcl"**  
– will run the ixNetworkWish. Ignore the returned error, `invalid command name "console"`.
- d. **source "C:/TAZ/IXIA/IxNetworks\_TCL\_DHCP.tcl"** – this will run the IxNetworks generated file. It is the same file specified in **Script{...} ArgB**.

If the tcl script fails to work correctly from the tcl shell, contact Ixia support.

If the script runs correctly, double check the **Equipment Table** settings, then contact Aztaz technical support.

---

## Third Party Disclaimer

This disclaimer pertains to all third-parties, including but not limited to: Microsoft, Cisco, Spirent, Ixia, Selenium, Mozilla, APC (Schneider Electric), Net-SNMP, Adobe.

AZTAZ Software, LLC is not affiliated, associated, authorized, endorsed by, or in any way connected to any third-party or third-party products referenced in any AZTAZ Software, LLC products, including but not limited to our website, software, marketing, videos, documentation or communications.

AZTAZ Software, LLC does not control, endorse, or accept responsibility for any materials, products, websites, or services offered by third parties that we may reference.

All product and company names are trademarks™ or registered® trademarks of their respective holders. Use of them does not imply any affiliation with or endorsement by their respective owners.